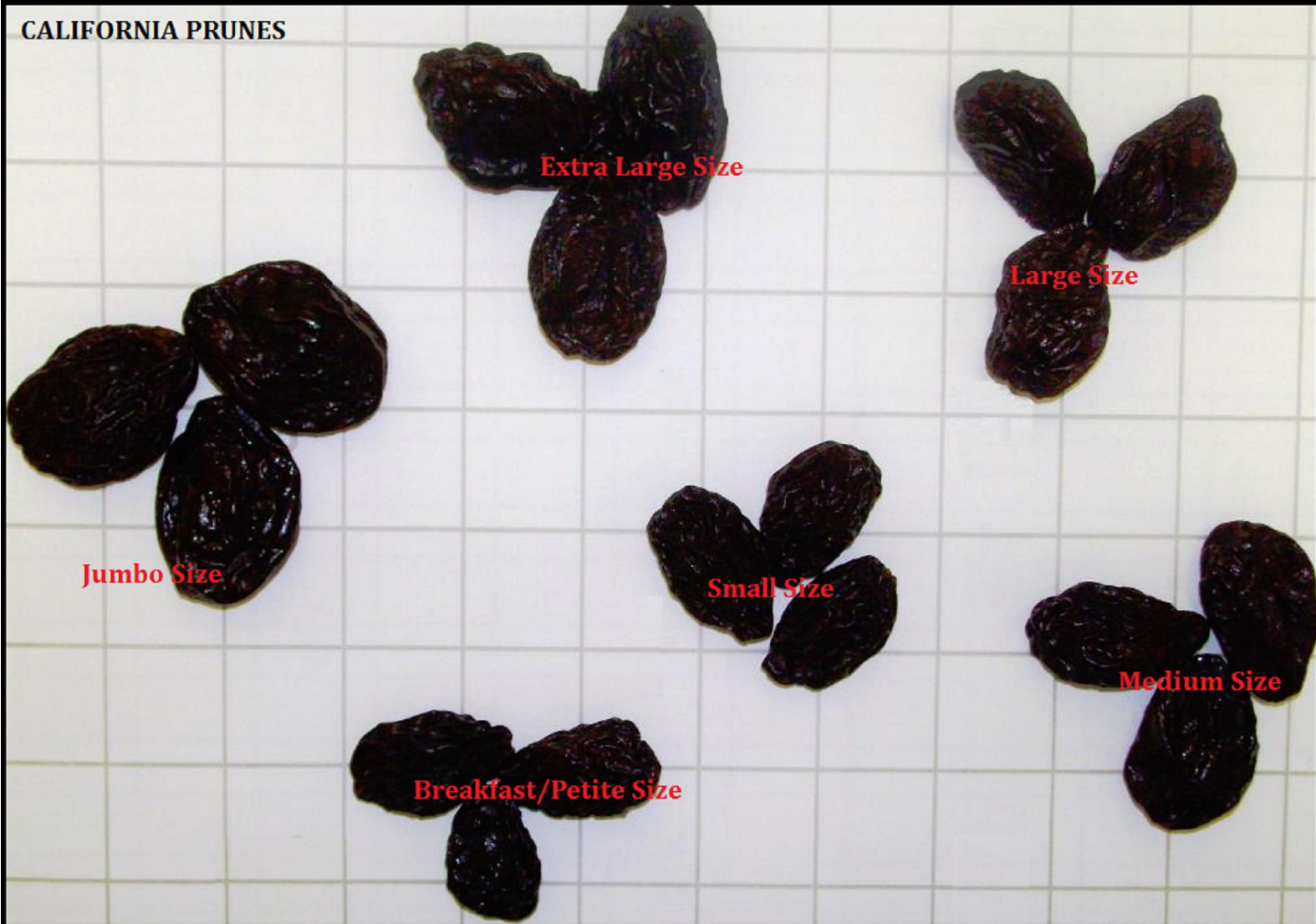


CALIFORNIA PRUNES



BULK PITTED DRIED PLUMS

Packed in Cases, with or without Preservatives *

TYPE OF PITTED	MOISTURE RANGE	NET WEIGHT	SHIPPING WEIGHT	RANGE OF PITTED SIZES (UNIT COUNT/LB.)	PRODUCT USE
Type I	25-35%	25 lb. 12 1/2 kgs	26 1/2 lb. 29 lb.	Jumbo: 39 and Larger Ex-Lg: 40/49 Lg: 50/61 Med: 62/79 Small: 80 & Smaller	For cooked dried plums, as is, stuffed, as an ingredient or a garnish
Type II	25 -35%	25 lb. 30 lb.	26 1/2 lb. 31 1/2 lb.	Jumbo: 39 and Larger Ex-Lg: 40/49 Lg: 50/61 Med: 62/79 Small: 80 & Smaller	For cooked dried plums, as is, as an ingredient or a garnish
Type III	25 -30%	25 lb. 30 lb.	26 1/2 lb. 31 1/2 lb.	Lg: 80 and Larger Small, Breakfast & Petite: 81 & Smaller	Can be cooked, but especially suited as an ingredient